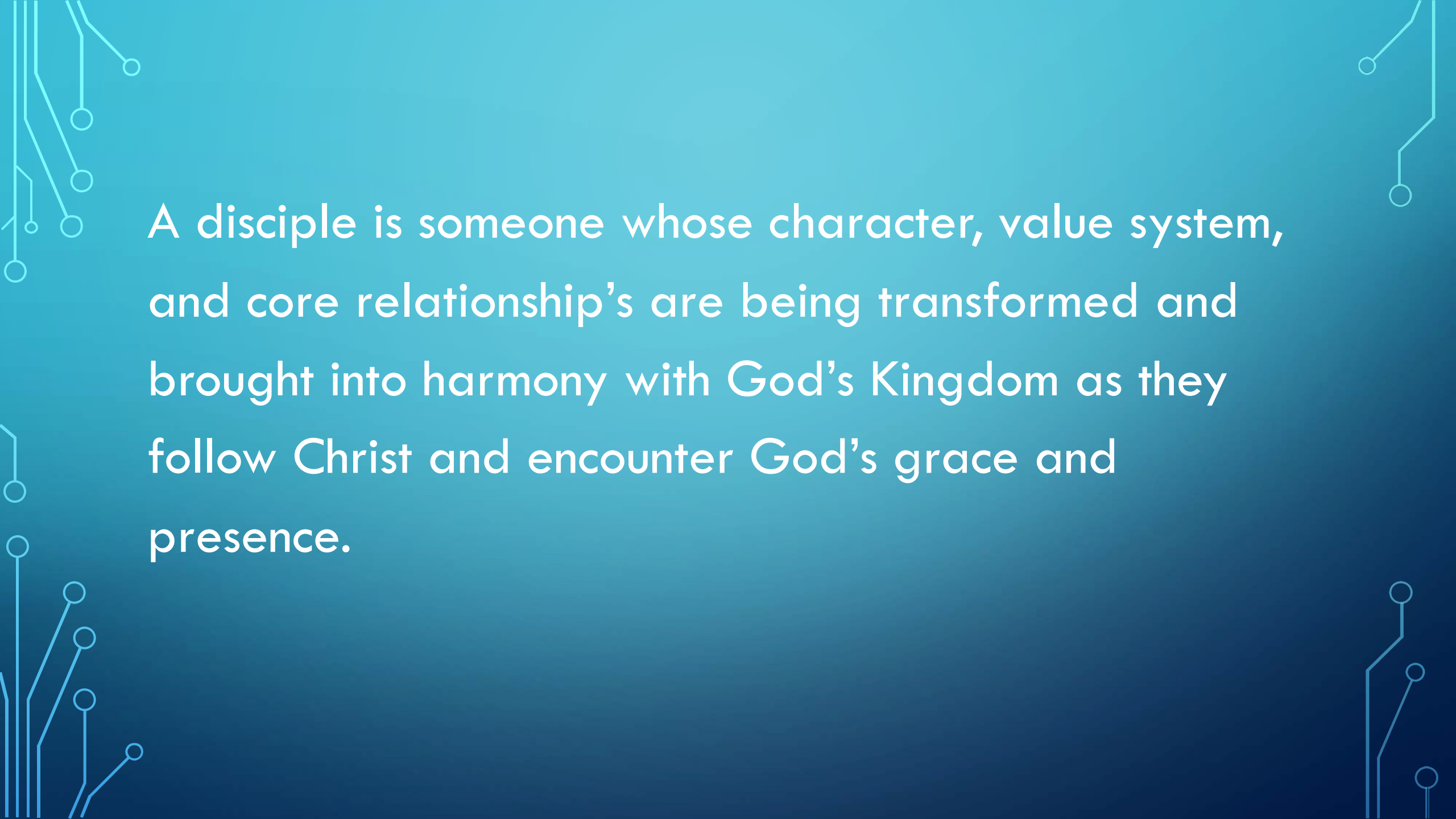


An abstract graphic on the left side of the slide, consisting of a network of light blue lines and small circles, resembling a circuit board or a neural network, set against a dark blue background.

# UNPACKING DISCIPLESHIP

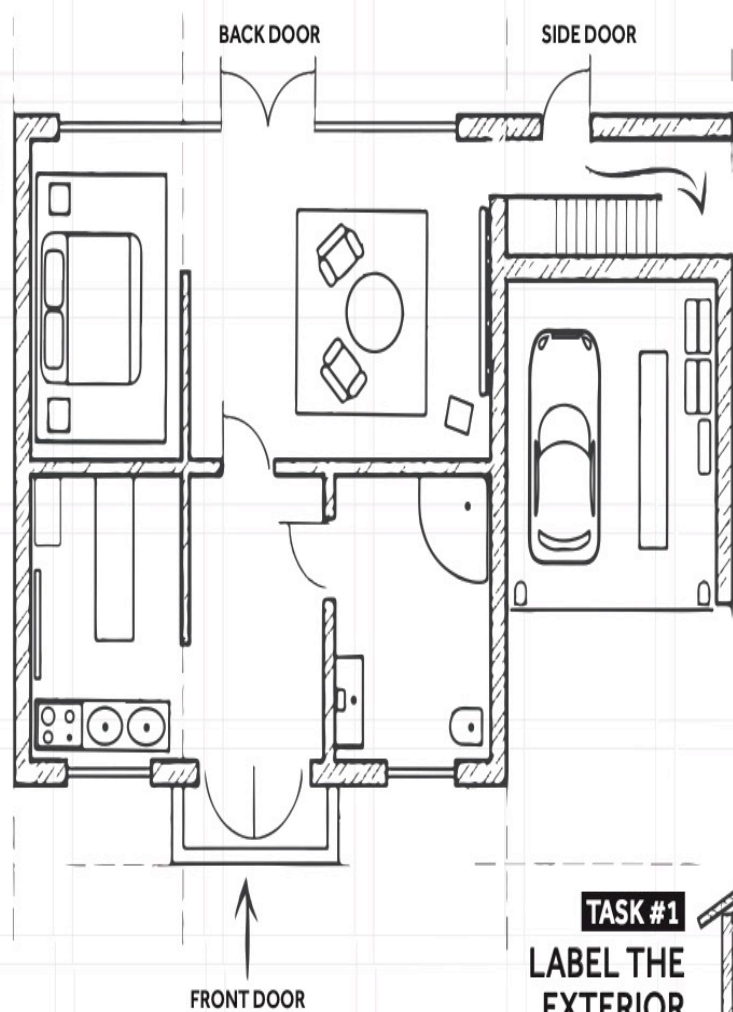
The background is a blue gradient. In the corners, there are white line-art illustrations of circuit boards or neural networks, with lines connecting to small circles.

WHAT IS YOUR WORKING DEFINITION  
OF A DISCIPLE?

The image features a blue gradient background with white circuit-like lines and circles in the corners. The text is centered in a white, sans-serif font.

A disciple is someone whose character, value system, and core relationship's are being transformed and brought into harmony with God's Kingdom as they follow Christ and encounter God's grace and presence.

**TASK #1**  
LABEL THE  
EXTERIOR



**TASK #2**  
LABEL THE  
INTERIOR

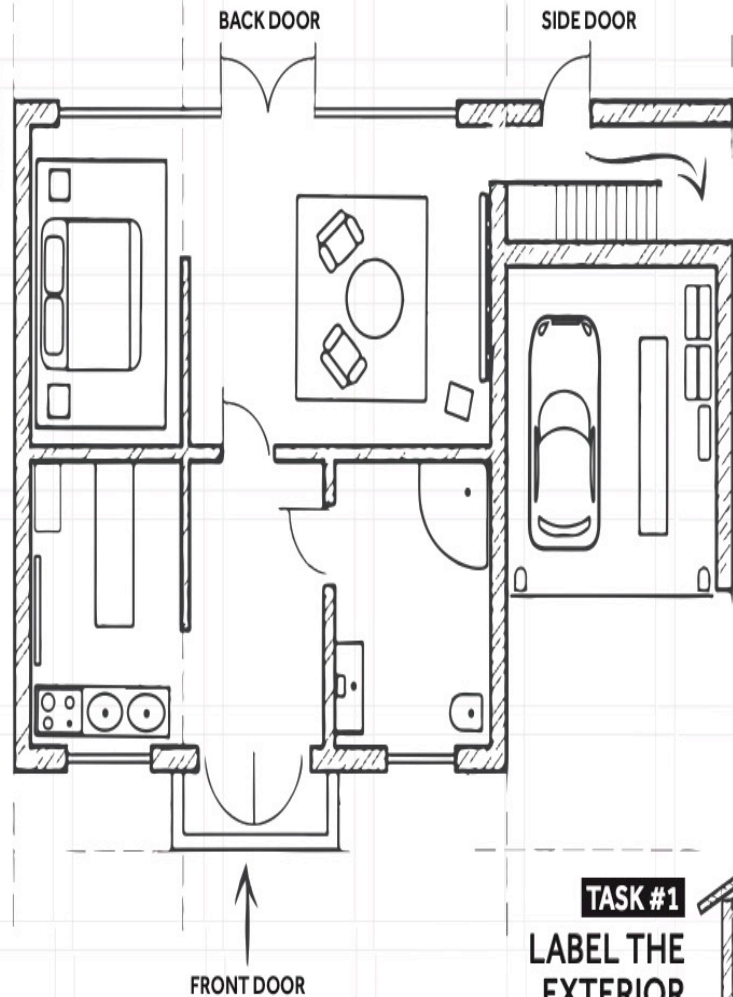
**TASK #1**  
LABEL THE  
EXTERIOR



**TASK #2**  
LABEL THE  
INTERIOR

- Attract?
- Entry points?
- Activities?
- What motivates movement towards interior?

**TASK #1**  
LABEL THE  
EXTERIOR



**TASK #2**  
LABEL THE  
INTERIOR

**TASK #1**  
LABEL THE  
EXTERIOR



**TASK #2**  
LABEL THE  
INTERIOR

- Rooms?
- Furniture?
- Upstairs?
- Progression?
- Invitation?

The background is a blue gradient. In the corners, there are white line-art illustrations of circuit boards or neural networks, with lines and small circles representing nodes and connections.

WHAT ATTRIBUTES WOULD BE IMPORTANT FOR A  
DISCIPLING ECOSYSTEM?



# APPRENTICESHIP MODEL



**Dave Ferguson**

@daveferguson

Following



Simple Tools for Hero Making: 5-Steps of Apprenticeship.

Step #1 - I do. You watch. We talk.

Step #2 - I do. You help. We talk.

Step #3 - You do. I help. We talk.

Step #4 - You do. I watch. We talk.

Step #5 - You do. Someone else watches.

[HeroMakerBook.org](http://HeroMakerBook.org)

8:22 PM - 23 May 2018

41 Retweets 113 Likes



4



41



113



# FRACTALS

Fractals are a reoccurring pattern that helps us measure, understand, and predict outcomes in complex systems.



Blue Meets 1<sup>st</sup> and 3<sup>rd</sup> week of each month

Green Meets 2<sup>nd</sup> and 4<sup>th</sup> week of each month

All meet together 5<sup>th</sup> Sunday's (3-4 times a year)

The fractal connection can be: Relationship, Affinity (music, mountain biking, etc), Task (ministry team), Generational, Geographic

